

Turnover and output for Business support service activities n.e.c. (ISIC 82.9) in Sweden

Mariah Nilsson
Statistics Sweden



Sveriges officiella
statistik

Outline

- Classification
- SBS in Sweden
- Basic data
- Turnover by product/customer
- Challenges/Further development



Classification

- UN's ISIC
 - EU's NACE
 - Sweden's SNI
 - = Same structure on class-level
-
- Product classification – small differences between CPA and SPIN

Conducting SBS in Sweden

- Annually
 - Entire business sector population
- Administrative data
 - Legal unit (KAU)
 - Income statement & Balance sheet
- Sample surveys (KAU)
 - Independent of admin data / Dependent on admin data
 - Net turnover & total costs by product
 - Gross & net investments of tangible assets

Non-response

- Administrative data
 - 6 % un-weighted, ~3 % weighted
- Sample surveys
 - Independent 85 % un-weighted, 89 % weighted
 - Pre-printed 82 % un-weighted, 88 % weighted

Dissemination

- Enterprise preliminary results t+10
- KAU data on products to NA t+13
- Enterprise & KAU definitive results t+16



82.9 – a tiny industry

- 1 147 enterprises (0.11 %)
- 89 KAU sampled (0.44 %)

SNI2007	Description	Enterprises
82.910	Activities of collection agencies and credit bureaus	110
82.920	Packaging activities	83
82.990	Other business support service activities	954

Contribution to business sector

- 0.11 % of net turnover
- 0.38 % of value added
- 0.20 % of total assets
- 0.88 % of employees (FTE)



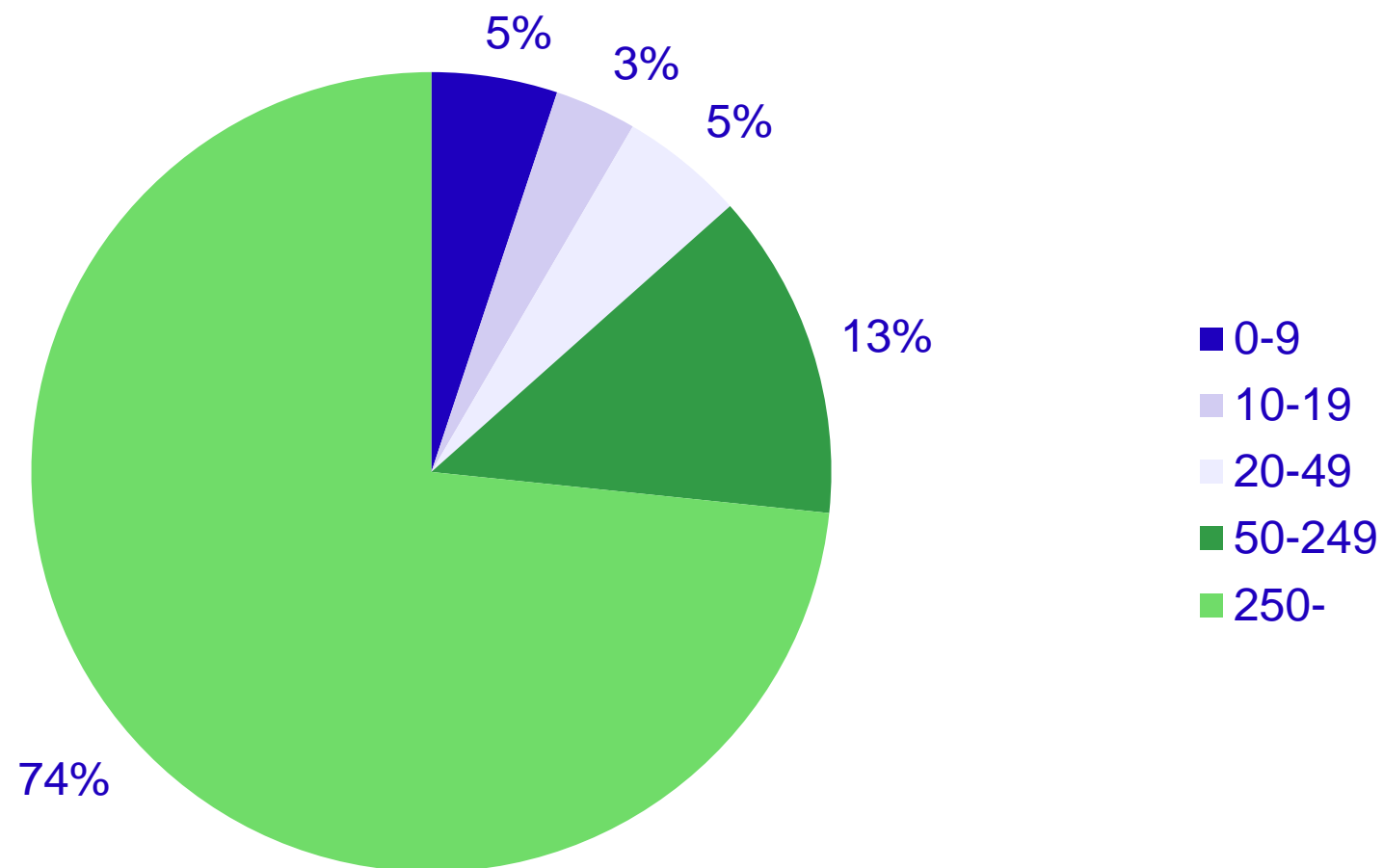
Basic data for NACE 82.9

from SBS2023

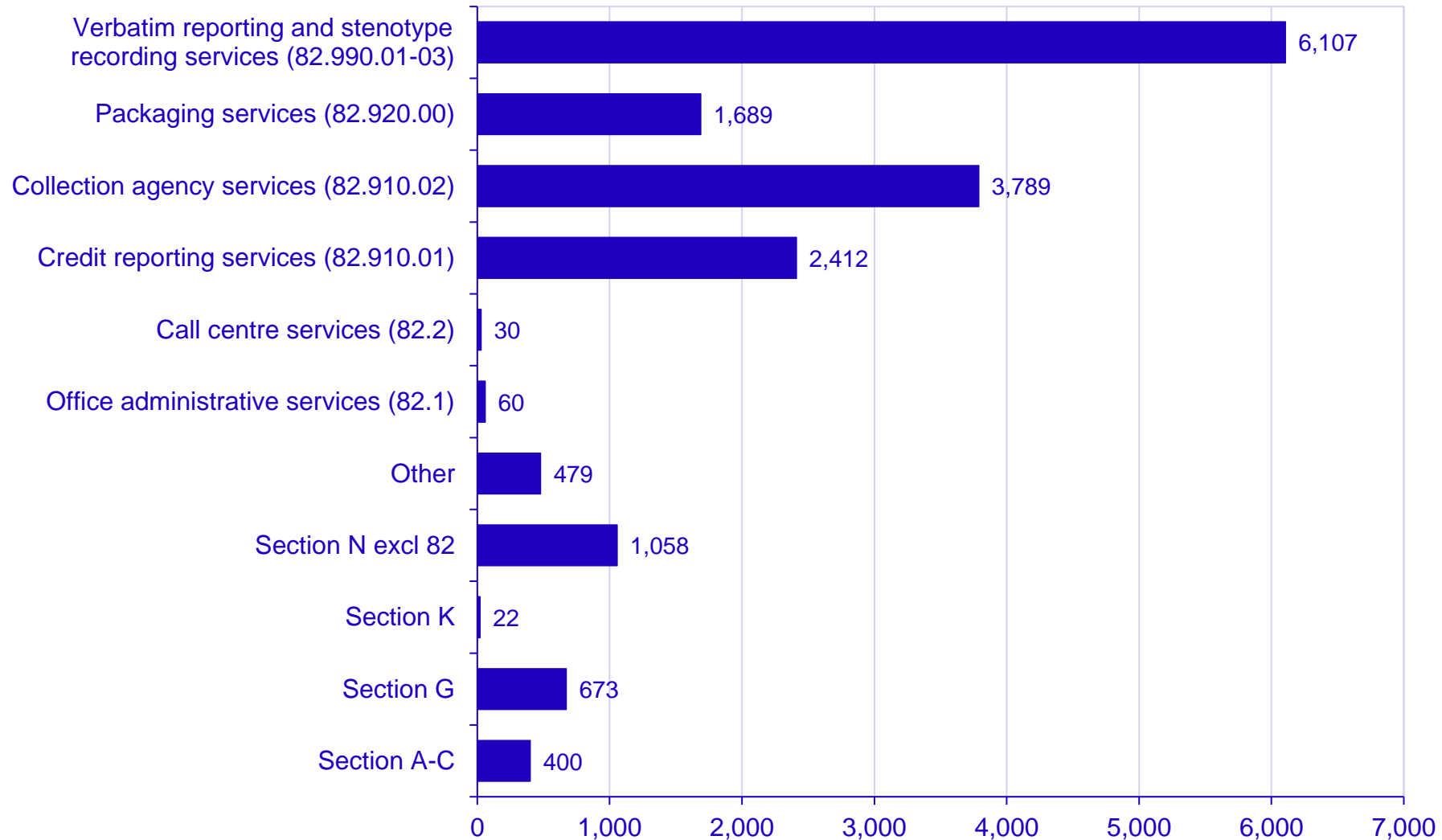
Variable	MSEK	MEUR
Net turnover	14 026	1 223
Value added	13 301	1 159
Total assets	42 720	3 850
Number of enterprises		1 147
Number of employees (FTE)		26 783

Size class data NACE 82

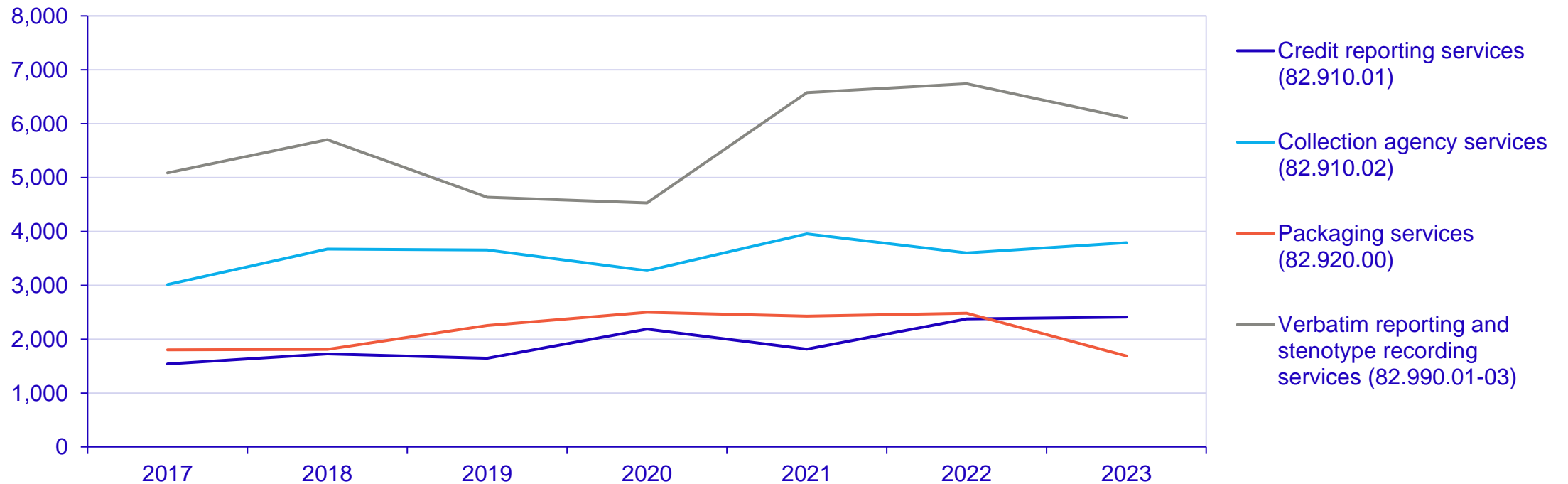
from SBS2023



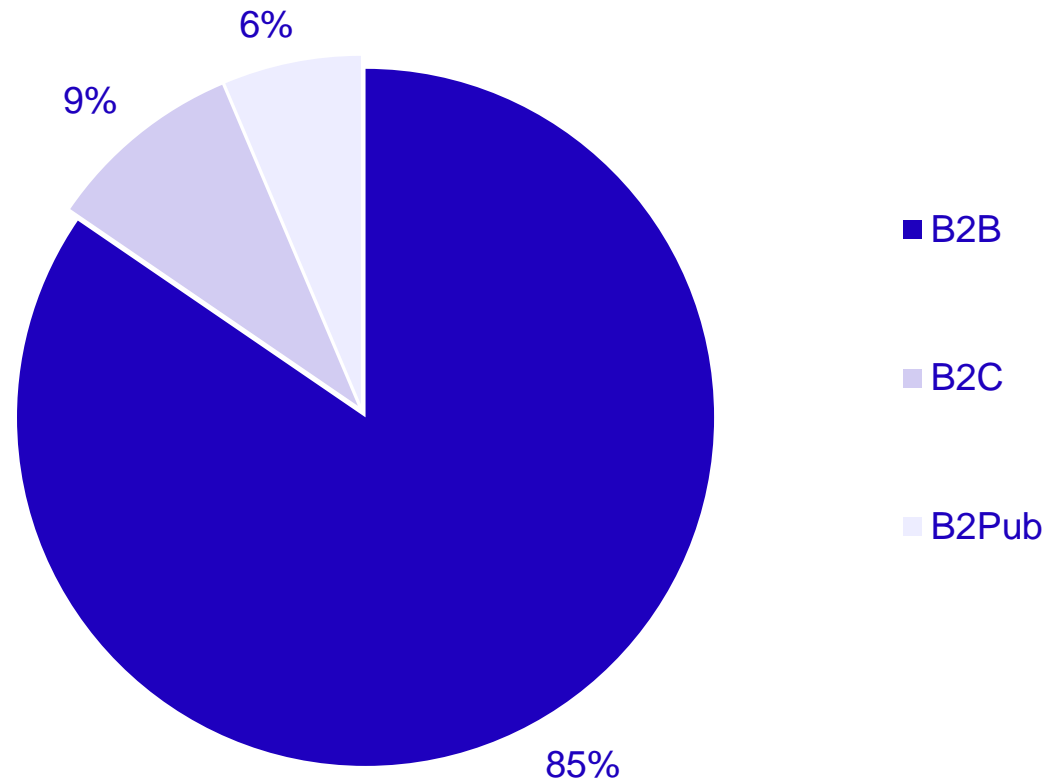
Net turnover by product 2023, percent



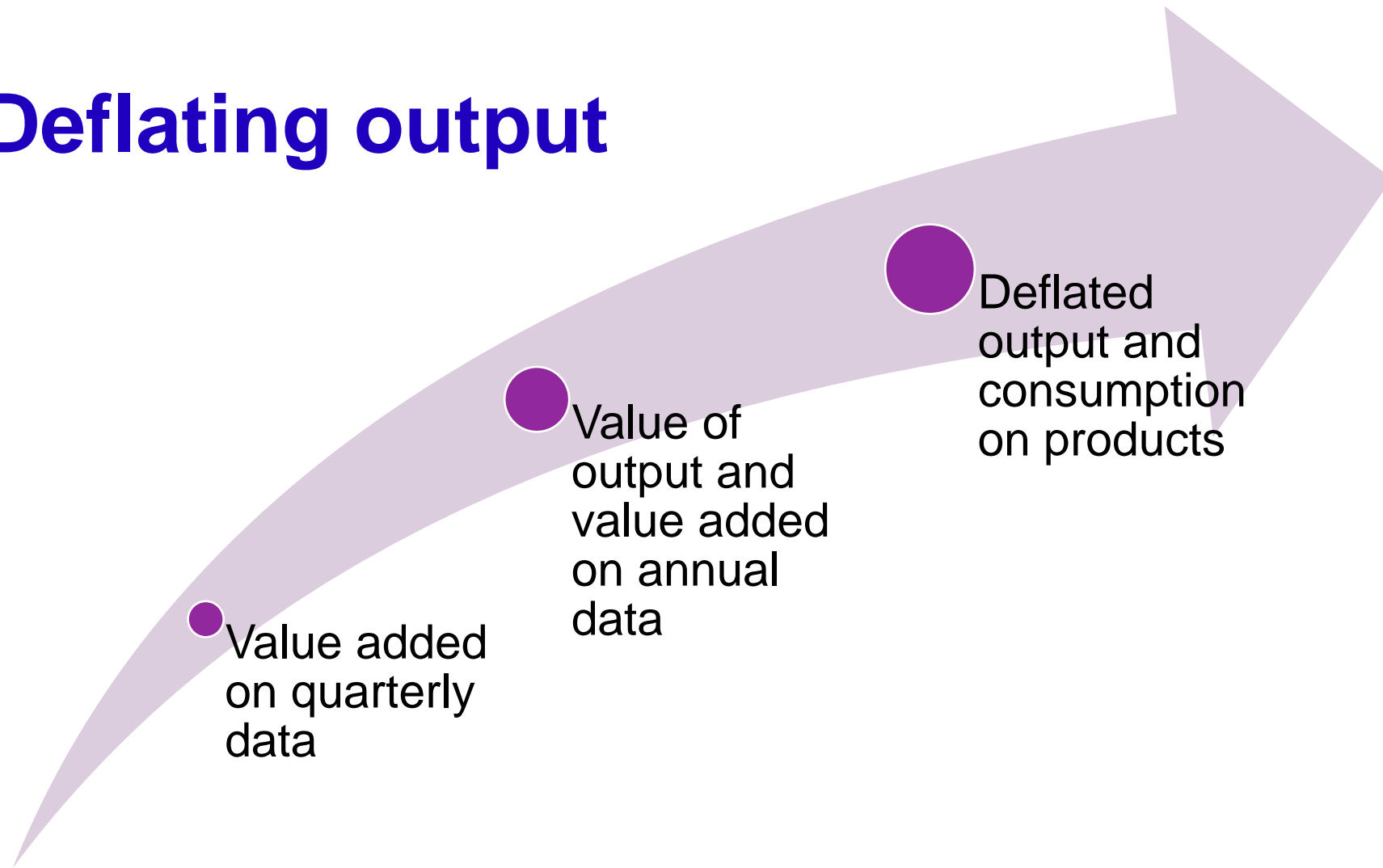
Product groups in 82.9 (SPIN2015), 2017-2023, MSEK



Turnover by customer



Deflating output



Future challenges/development

2023

2024

20??

New
datasources

- Digitalized annual reports
- PAYE

Extended use

- More info from digi.annual reports

Newer data
sources

- Bank transactions
- Electronic invoces

SCB

Thank you for your attention!

mariah.nilsson@scb.se

